



**TEST REPORT**  
**ON**  
**500 MHz to 5 GHz**  
**SINGLE POLE SINGLE THROW**  
**ABSORPTIVE / NON-REFLECTIVE SWITCH MODULE**

**AMC MODEL No:**  
**SWN-2183-1AT**  
**OPTION HPR1W, 055, 6, LVT**

**Serial Numbers: 1MS910342 AND 1MS610343**

**DESIGNED**  
**BY**  
**R. Afable**

**TESTED**  
**BY**  
**C. Wendland**

**REPORTED**  
**BY**  
**E. Elder**

**October 25, 2004**

*DRH* ✗ *LC* *SKM*  
*JK* *OW* *JET* *PA*  
*ESS.*  
*mjb*  
*XI*

**AMERICAN MICROWAVE CORPORATION., 7311-G Grove Road, Frederick, MD 21704**  
**Tel: 301-662-4700 • Fax: 301-662-4938 • Email: [sales@americanmicrowavecorp.com](mailto:sales@americanmicrowavecorp.com)**  
**Website: <http://www.americanmicrowavecorp.com>**

**ISO9001 : 2000 CERTIFIED**

## TABLE OF CONTENTS

●	PRODUCT DESCRIPTION AND ELECTRICAL SPECIFICATIONS	PAGE 3
●	PRODUCT FEATURE AND ENVIRONMENTAL SPECIFICATIONS	PAGE 4
●	MECHANICAL OUTLINE	PAGE 5
●	FUNCTIONAL SCHEMATIC	PAGE 6
●	TEST DATA ON SWN-2183-1AT OPTION HPR1W, 055, 6, LVT SERIAL NUMBERS 1MS910342 AND 1MS910343	PAGE 7
●	TEST DATA FOR SWN-2183-1AT OPTION HPR1W, 055, 6, LVT SERIAL NUMBERS 1MS910342	PAGE 8
●	TEST DATA FOR SWN-2183-1AT OPTION HPR1W, 055, 6, LVT SERIAL NUMBERS 1MS910343	PAGE 9

## **SINGLE POLE SINGLE THROW ABSORPTIVE / NON-REFLECTIVE SWITCH MODULE AMC MODEL No: SWN-2183-1AT OPTIONS HPR1W, 055, 6, LVT**

### **FEATURES:**

- **500 MHz TO 5 GHz FREQUENCY RANGE**
- **HIGH POWER**
- **LOW VIDEO TRANSIENT**
- **LOW INSERTION LOSS**
- **HIGH ISOLATION**
- **INTEGRAL TTL DRIVER**

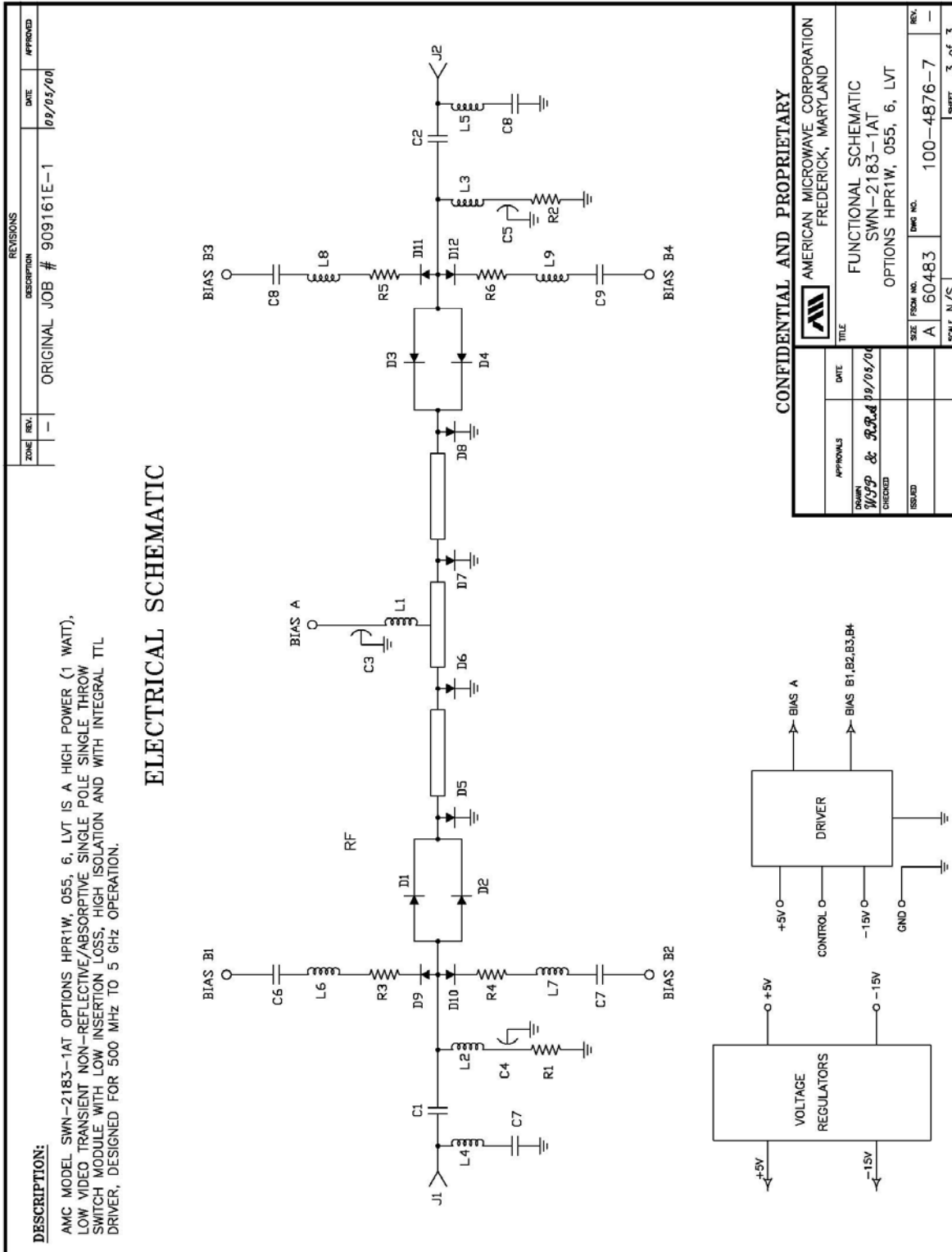
### **SPECIFICATIONS:**

- |                    |   |  |
|--------------------|---|--|
| ● FREQUENCY        | : | 500 MHz TO 5 GHz   |
| ● INSERTION LOSS   | : | 1.5 dB MAXIMUM   |
| ● ISOLATION        | : | 60 dB MINIMUM  |
| ● VSWR             | : | 2.0:1  |
| ● VIDEO TRANSIENT  | : | 300 MHz BANDWIDTH:<br>400 mV PEAK TO PEAK TYPICAL<br>20 MHz BANDWIDTH:<br>30 mV PEAK TO PEAK TYPICAL |
| ● RISE / FALL TIME | : | 10 ns MAXIMUM, 5 ns TYPICAL  |
| ● DELAY ON/OFF     | : | 50 ns MAXIMUM, 40 ns TYPICAL   |
| ● POWER SUPPLY     | : | +5 V @ 100 mA MAXIMUM<br>-15 V @ 100 mA MAXIMUM  |
| ● CONTROL          | : | TTL LOGIC "0"=ON, "1"OFF   |
| ● SIZE             | : | 1.00" (L) x 1.00" (W) x 0.50" (H)  |
| ● WEIGHT           | : | 1.5 OUNCES TYPICAL   |





**FUNCTIONAL SCHEMATIC**



## **FINAL TEST DATA**

**FINAL TEST DATA SHEETS**

**FOR**

**AMC MODEL NUMBER**

**SWN-2183-1AT**  
**OPTION HPR1W, 055, 6, LVT**

**Serial Numbers:**

**1MS910342 AND 1MS910343**





